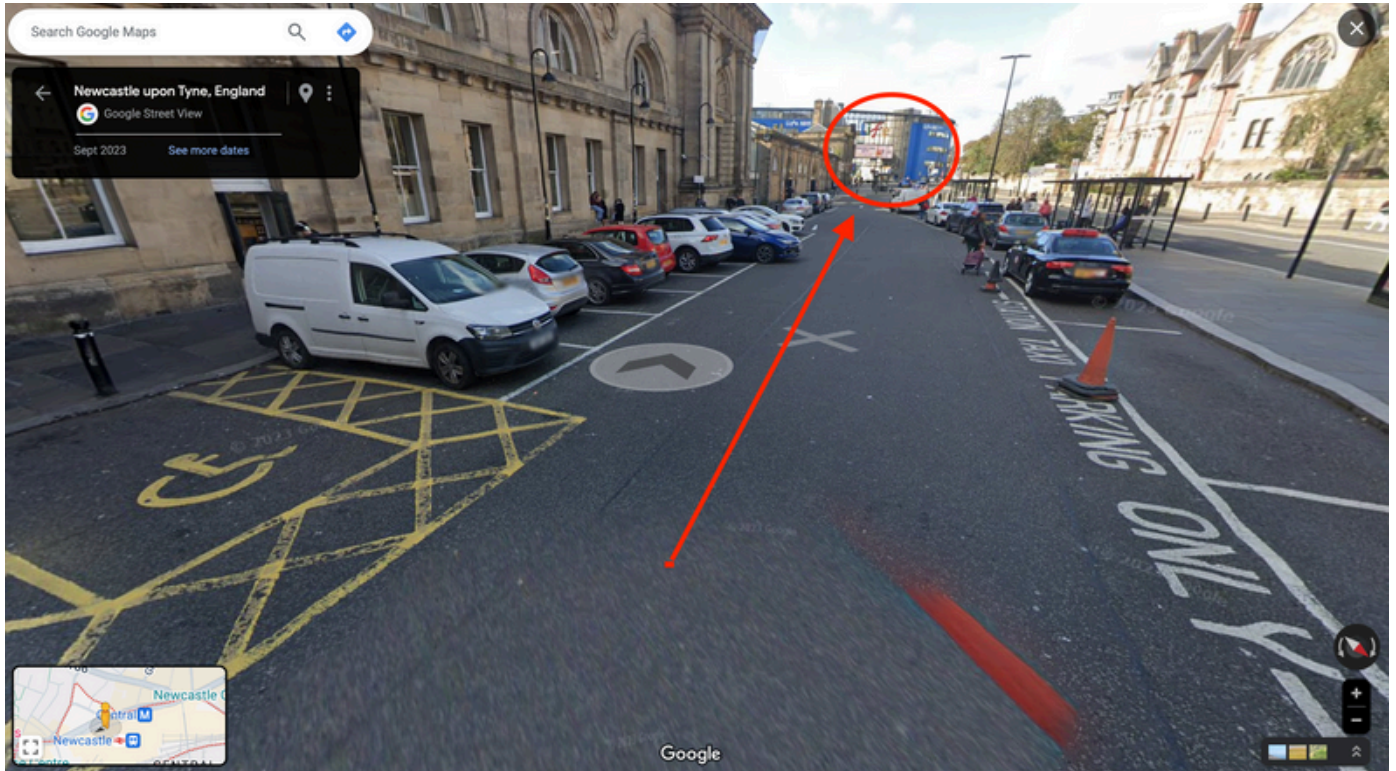


Directions to Leonardo Hotel NE1 4AD from Newcastle Central Station. Follow the red arrows and head for the circles. It should only take you 5 to 8 mins to walk from the station to the hotel.

Turn left out of central station. Through the long car park. You will see Life Centre straight ahead



At Life Centre, turn left into the big open-air square (sometimes there are events so there may be tents or tables there).



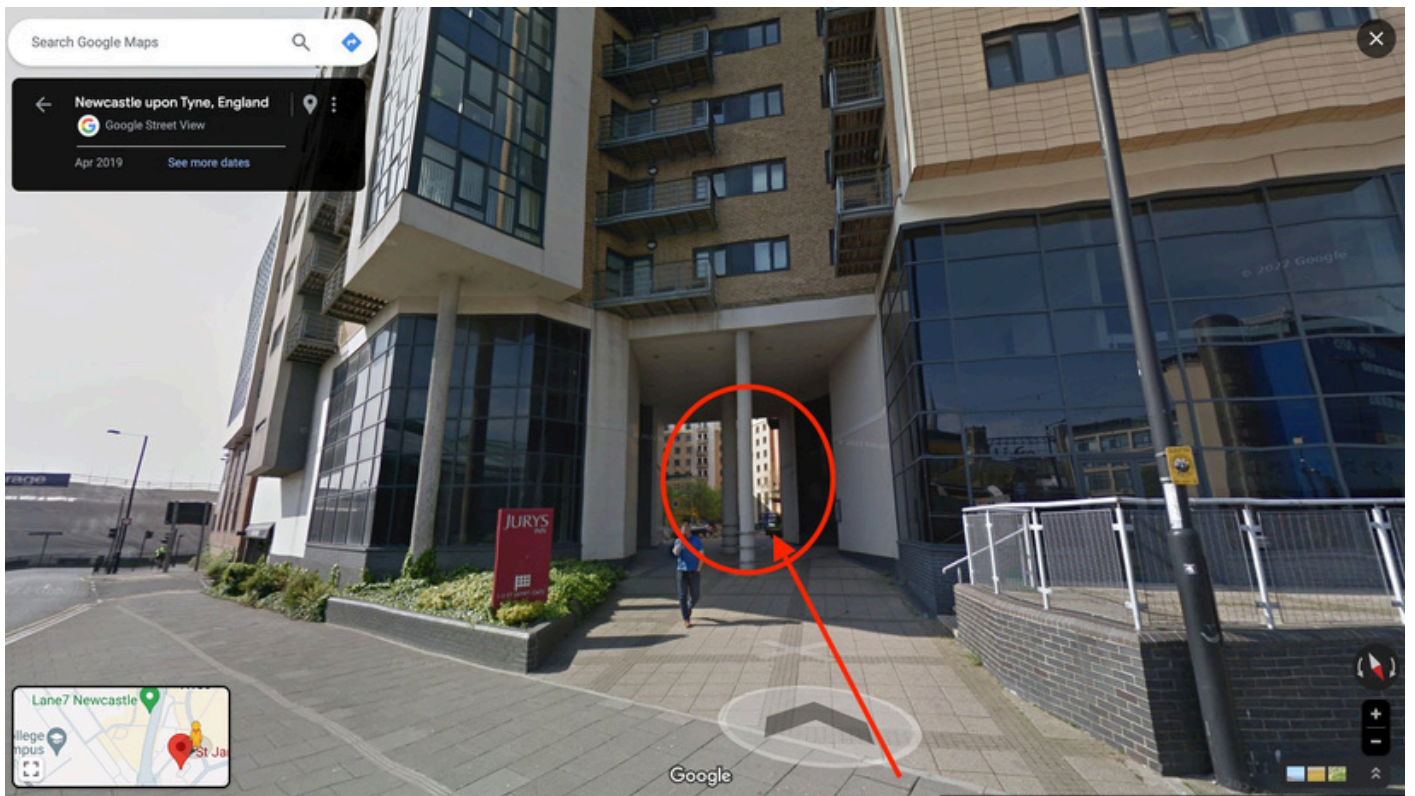
Walk past the old small building in the middle of the square towards the high-rise building (this is called St James Gate and our hotel is in there)



Cross the roads and walk towards the archway entrance to St James Gate



Walk through the archway



Walk straight ahead and through the grass area in the middle, you will see Leonardo Hotel

- Go into the hotel – turn left – and take the stairs or lift to **the first floor**.
- Immediately at the top of the stairs is the glass fronted **first-floor reception** with sofas and chairs.
- Wait in there – our groups start to gather about 15 mins before the class
- We'll come and bring you to the workshop room along the corridor

